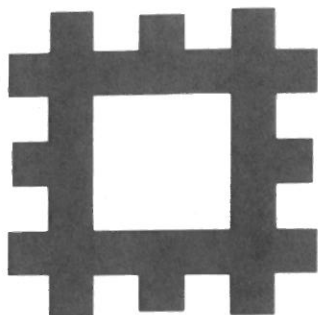




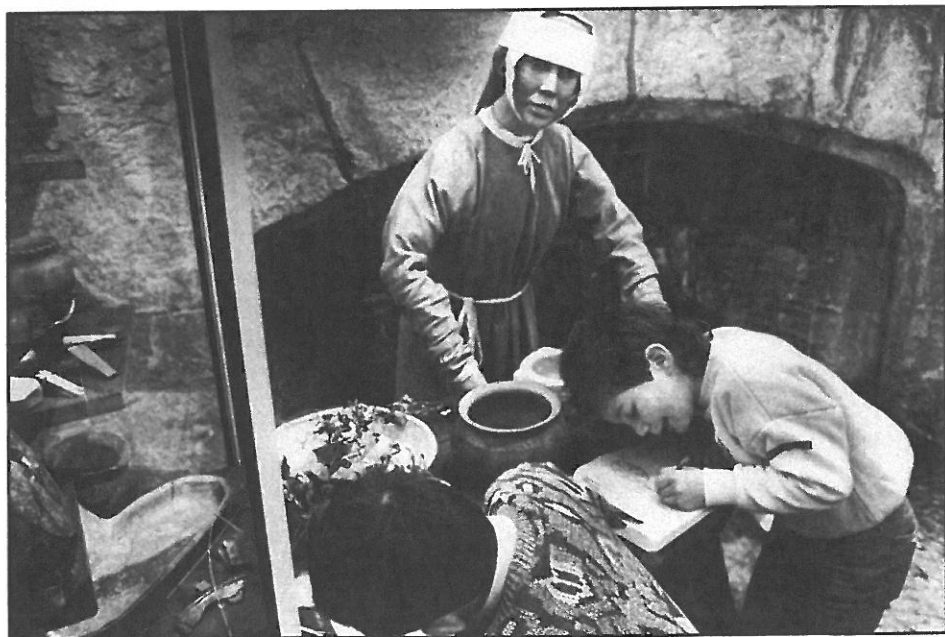
REMNANTS



Journal of the
English Heritage Education Service
No. 8 Summer 1989

Museums and the Merchant's House, Southampton

Last year English Heritage opened the 13th Century French wine merchant's house at 58 French Street. Now Southampton City Museums' Education Service have begun to use it as a setting for workshops for children.



God's House Tower Museum of Archaeology
— a medieval housewife at work.

As one of the Museums' teachers I wanted to take children's workshops on from the museums to the **Medieval Merchant's House** to let children see artefacts in our own Museum of Archaeology — and then to understand their place in a wealthy medieval merchant's house.

In medieval times rich merchants and their families (both men and women) lived in stone houses close to this lively port. Their wealth was made by exporting wool and cloth, and importing wine. Southampton was an international trading centre as the artefacts in our museums show. We have glass from Venice, pottery from France and an illustrated trading map (based on contemporary documents), showing imports from various countries of Europe; such as wax, leather and spices — brought into the port by the medieval ships called cogs. Much of the glass and pottery on display was excavated from a merchant's house between the Museum of Archaeology and 58 French Street, and this site is also available for school visits.

Aware that Southampton teachers hardly knew that the Merchant's House existed (at the time of its opening in the summer of 1988) I re-launched our usual workshop in God's House Tower Museum — 'Living In A Medieval Town' and then added a visit to the Medieval Merchant's House as part of the programme.



A Special Museums Year Issue

TEACHERS COURSES

Interpreting the Historic House

English Heritage is running a series of courses on the educational use of the historic house. They are intended to be useful to both teachers and people who work at sites and museums and they will introduce different approaches to helping people understand houses.

Screen Printing

12 October 1989, Boscobel House, Shropshire.

18 October 1989, Rangers House, Blackheath, London SE10.

Tutor: Nick Reading

Using Documents

17 October 1989, Marble Hill House, Twickenham.

Tutors: Julius Bryant and Gail Durbin.

The Concept Keyboard

15 November 1989, Rangers House, Blackheath, London SE10.

Tutors: Sue Bennett and Gail Durbin.

Using Portraits

17 November 1989, Rangers House, Blackheath, London SE10.

Tutor: Susan Morris

Courses run from 10 a.m. to 4.30 p.m. You may book a single course or several. They are free but there will be a charge for materials for the screen printing course.

New developments at Birdoswald Roman Fort

As part of a teaching secondment arranged between English Heritage and Cumbria LEA, Diane Mortimer is working with schools to exploit fully the potential of Roman sites in the county.

Activity is especially focusing on Birdoswald Roman Fort, a major site on Hadrian's Wall dramatically situated above the Irthing Gorge near Brampton. Here new visitor facilities are being developed between the County Council and English Heritage, who have guardianship of the external walls. One of the best preserved lengths of Hadrian's Wall leads from the Fort to a milecastle overlooking the Irthing and the Roman bridge at Willowford.



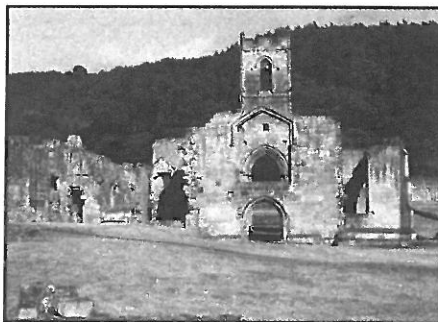
Making a rubbing of one of the building stones to take back to school.

Sections of the Turf Wall, the Vallum and several turrets can be examined in the immediate vicinity; and nearby Lanercost Priory was part-built of re-used Roman stone. The third season of the current excavations being carried out by English Heritage has started and continues until 8 September. An impressive granary, now consolidated, has been uncovered; a second granary, the fort's main road and west gate will be further examined.

Facilities available this year include an interpretation display which gives an introduction to the Roman phases of the site, and also the medieval and later history. The farmhouse was rebuilt to include a Gothic pele tower by a Victorian farmer who hired archaeologists to uncover romantic ruins to surround it. At present housed in the upper part of the exhibition building is an area for use by pre-booked educational groups. It has been equipped by the Education Service of English Heritage and offers seating and tables for groups of 30, and projection equipment. Other resources are being built up. Free use of this facility and free entry for groups should be arranged by application to the Site Manager, Adam Slade, Birdoswald Roman Fort, near Gilsland, Carlisle CA6 7DD. Tel: 06972 602, from whom further information can be obtained. Assistance with educational planning can be given by Diane Mortimer, Cumbria Heritage Project Officer, who can be contacted via the Manager.

Birdoswald Fort Wall and Turret is 2½ miles West of Greenhead on minor road off B6318. OS Map 86; ref NY 615663.

Mount Grace Priory



Mount Grace Priory, North Yorkshire, is the finest example in the country of a Carthusian monastery. The site has recently had a major upgrading of visitor facilities, including our latest Education Centre, within the guest house range. The centre is furnished, with sink facilities and has been equipped with audio-visual and other resources for use on site visits.

In addition, a new exhibition has been opened on the history of the Priory and the Carthusian Order, which includes site models and displays of archaeological remains. A Carthusian cell has been refurbished with replica medieval furniture complete with loom, bed and altar. It is also planned to cultivate a garden as a monk would have kept it.

A visit to Mount Grace would tie in easily with any field centre visit to the North Yorkshire Moors National Park. You can book a free visit and use of the Education Centre via our York Area Office. Tel: 0904 658262.

Mount Grace Priory is 7 miles North East of Northallerton on A19 near Ingleby Arncliffe. OS Map 99; ref SE 453982.



Information for Teachers

Did you know . . . there are over 80 castles and 350 sites in all which you can visit free of charge as a group provided that you prebook? Our free booklet **Information for Teachers**, contains a list of all our sites together with many practical ideas for getting the most out of school visits, and our new booking form. Our catalogue **Resources** is also still available on request. For copies of the above, further details of our teachers courses and any other information about our Education Service please contact:

**English Heritage
Education Service
Keysign House
429 Oxford Street
London W1R 2HD
01-355-1303 Ext. 231**

Please send any order for our publications or videos to:

**English Heritage Store
PO Box 43, Ruislip,
Middlesex HA4 0XW**

REMNANTS, the Journal of the English Heritage Education Service, is edited by Mike Corbishley (Head of Education) and Ken Glen (Education Administrator). Text copyright is of individual contributors. Designed by Alan McPherson. Typesetting by Citytype, Leicester. Printed in England by Hythe Offset Ltd. ISSN 0269-9656 © English Heritage 1989

English Heritage